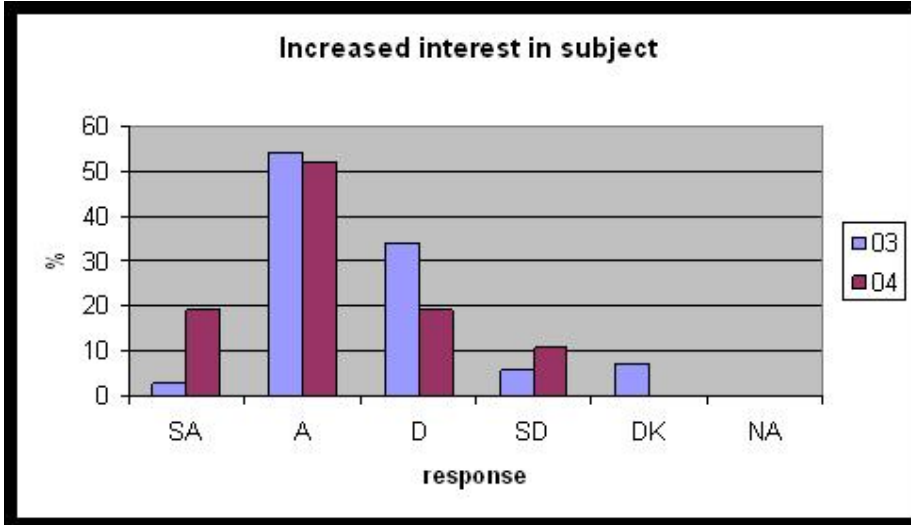


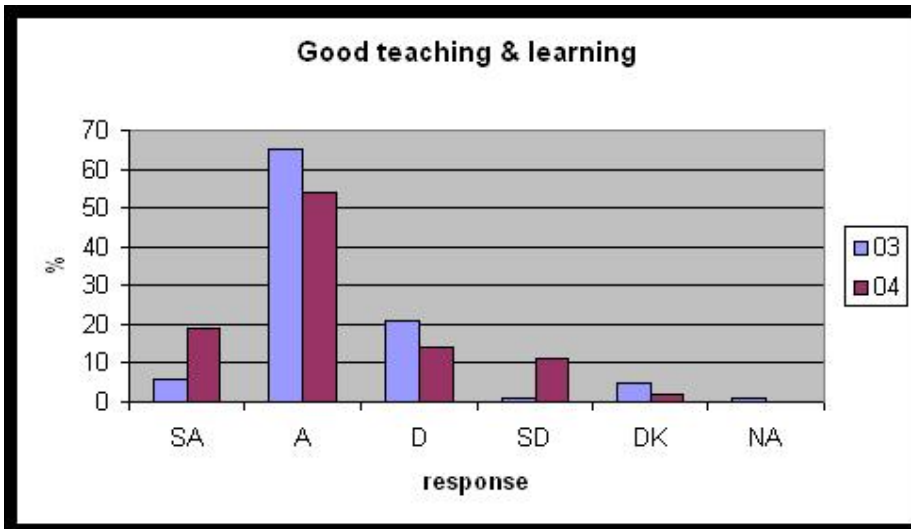
Derby e-Assessment Formal Student Feedback

Students complete a formal student feedback appraisal form on each module at the end of each semester. Students respond to a series of statements with one of 6 responses, strongly agree, agree, disagree, strongly disagree, don't know, not applicable. The following pictures compare the results for the year 2004/05 when the computer-based formative assessment was introduced with the same questions for the previous year. The statement was:

The module has stimulated my interest in the subject area: (see below)



The learning and teaching methods used have helped me achieve the module learning outcomes: (see below)



The workload for this module was manageable:

